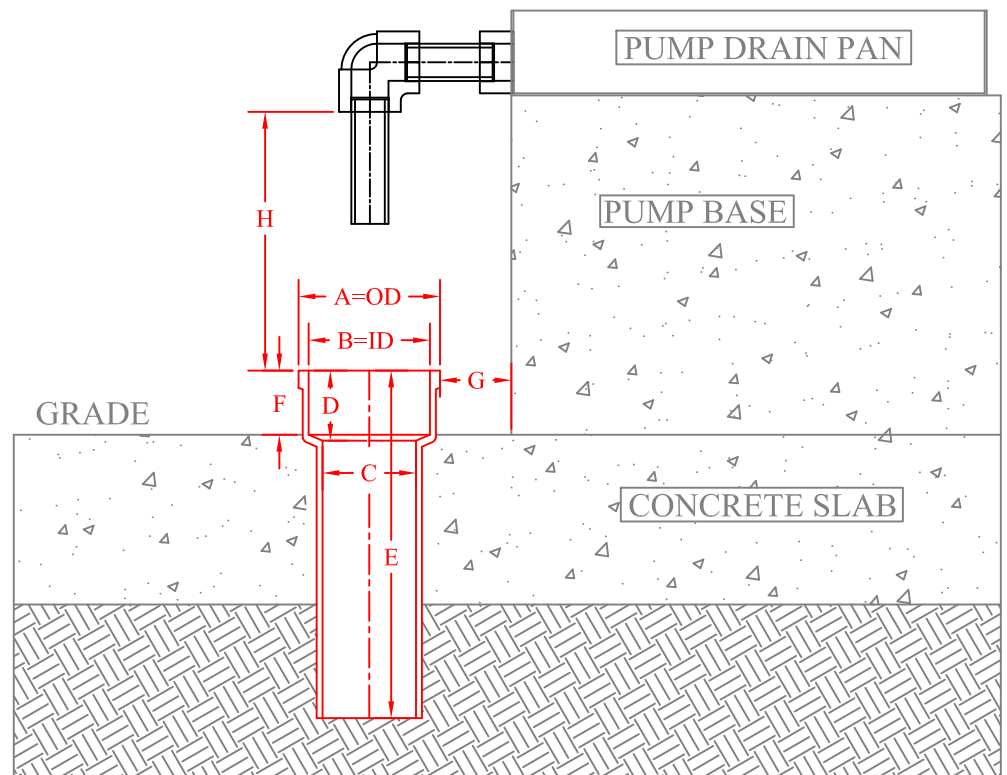


MEASURING NOTES FOR CAST IRON HUBS.

1. CHECK INSIDE OF HUB FOR ANY SCALE BUILDUP OR TRASH AND REMOVE PRIOR TO TAKING MEASUREMENTS.
2. MEASURE "C" DIMENSION WITH ID CALIPERS. SET CALIPERS SO THEY LIGHTLY TOUCH INSIDE WALL OF PIPE. SLIDE CALIPERS UP & DOWN & ROTATE TO ASSURE PIPE IS ROUND AND THERE ARE NO OBSTRUCTIONS.
3. MEASURE "D" DIMENSION TO BEGINING OF SMALLEST DIAMETER "C".
4. MEASURE "E" DIMENSION AT CENTER OF HUB TO ANY OBSTRUCTION (90 OR 45). DEPTH SHOULD BE STRAIGHT TO 10" FOR 4" LINES AND 12" FOR 6" LINES. IF OBSTRUCTION INTERFEARS WITH REQUIRED DEPTH, USE APPROPRIATE MEASURE SHEET OR MAKE SKETCH
5. DIMENSION "F" IS DISTANCE HUB SITS ABOVE GRADE.
6. DIMENSION "G" IS DISTANCE HUB SITS FROM ANY FOUNDATION.
7. DIMENSION "H" IS DISTANCE TO ANY DRAIN LINE OR OTHER OBSTRUCTION ABOVE TOP OF HUB PREVENTING INSTALLATION OF ESSCO SEWER SEAL. VERIFY THAT DRAIN LINES CAN BE REVISED AND OBSTRUCTIONS CAN BE MOVED.
8. TAKE DIGITAL PHOTOGRAPH AND SEND WITH MEASURE SHEET.

A=
B=
C=
D=
E=
F=
G=
H=



CUSTOMER:

DATE:

MATERIAL: TYPE 304 STAINLESS STEEL

DWG. NO: MSCIH

REV :

ESSCO PRODUCTS ARE PROTECTED BY U.S. & INTERNATIONAL PATENTS AND/OR PATENTS PENDING

MEASURE SHEET CAST IRON HUB

**ESSCO**

ENVIROSAFE SEALING SYSTEMS CO., INC.  
BATON ROUGE, LA (225) 753-1505

SERIAL NO.:

MODEL: