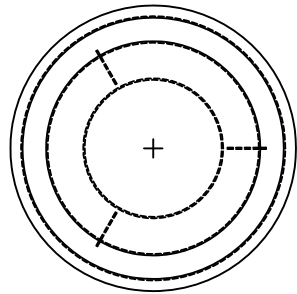
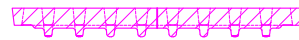
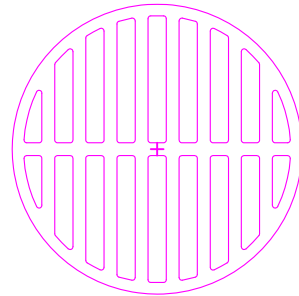


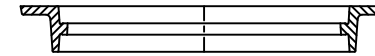
ESSCO SEWER SEAL APPLICATIONS BY DESIGN HAVE A GREATER FLOW CAPACITY THAN THE GRATES THAT COVER THEM. THE GRATE USED IN THIS APPLICATION IS A NEENAH R-5901-F (25 1/4" OD), WITH AN OPEN AREA OF 1.6 SQ. FT. AND A FLOW CAPACITY OF 314 GPM AT 1" PONDING BASED ON A 1 1/2" GRATE THICKNESS. FLOW CALCULATIONS THROUGH THE ESSCO SEWER SEAL FOR THIS APPLICATION IS BASED ON A VELOCITY HEAD MEASURED FROM THE TOP OF THE WEIR TO THE TOP OF THE GRATE (6.75" OR 0.56'). BASED ON A WEIR ID OF 12" AND A VELOCITY HEAD OF 0.56', THE CALCULATED FLOW THROUGH THE ESSCO SEWER SEAL USING CAMERON HYDRAULIC DATA TABLES WOULD BE 2100 GPM. THE ESSCO SEWER SEAL FLOW RATE BETWEEN THE CAP AND BODY AND THE CAP AND WEIR IS DESIGNED AT 120% OF THE FLOW CAPACITY OF THE 12" ID WEIR. FLOW RATE CALCULATIONS THROUGH THE ESSCO SEWER SEAL DOES NOT ACCOUNT FOR LOSSES IN THE UNDERGROUND SEWER PIPING DUE TO PLUGGED OR UNDERSIZED PIPING.



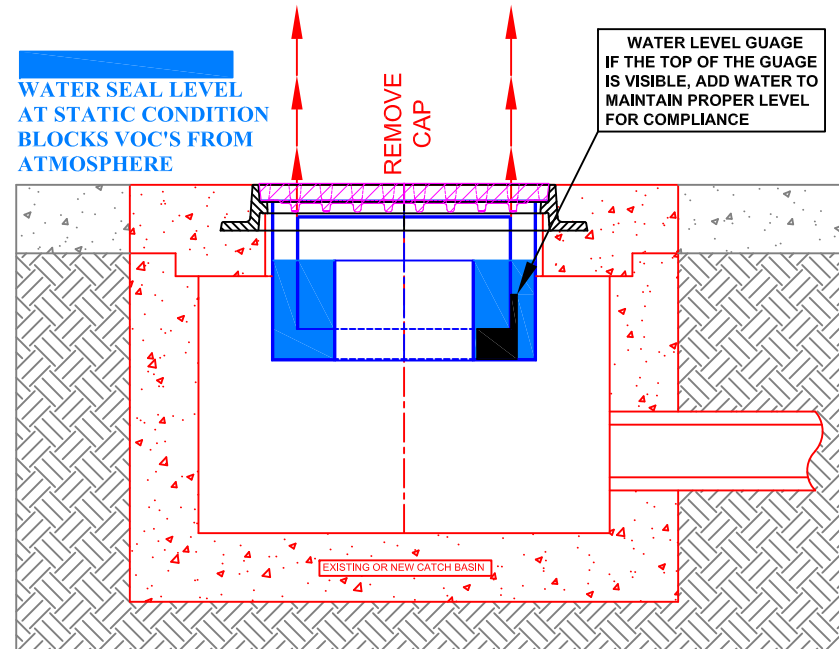
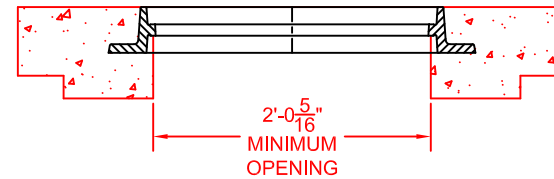
PLAN



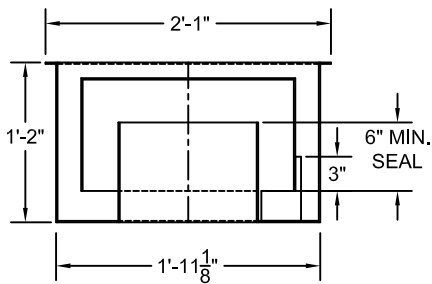
EJ CO. FRAME & GRATE  
 CAT. NO. V1600-3, V3600-3  
 FLOW THROUGH GRATE  
 1" PONDING - 314 GPM  
 2" PONDING - 673 GPM  
 3" PONDING - 1212 GPM  
 4" PONDING - 1527 GPM



EJ CATALOG # V1600-3  
 REVERSABLE FRAME



EXISTING SURFACE DRAIN CATCH BASIN RETROFITTED WITH  
 QQQ, B-1 & HON COMPLIANT ESSCO CATCH BASIN INSERT



ELEVATION

FLOW THROUGH CATCH BASIN  
 WITH OUT GRATE = 2100 GPM

CUSTOMER:

DATE:

MATERIAL: TYPE 304 STAINLESS STEEL

DWG. NO:

REV : 0

ESSCO PRODUCTS ARE PROTECTED  
 BY U.S. & INTERNATIONAL PATENTS  
 AND/OR PATENTS PENDING

ESSCO SEWER SEAL, CATCH BASIN INSERT

**ESSCO**

ENVIROSAFE SEALING SYSTEMS CO., INC.  
 BATON ROUGE, LA (225) 753-1505

SERIAL NO.:

MODEL: ESS-SDI-23R12-14 / V3600-3