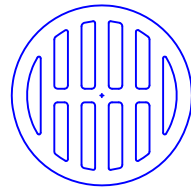


RECOMMENDED CONNECTION

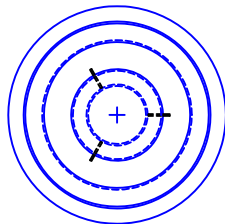
ESSCO RECOMMENDS THE STRAUB COUPLING FOR JOINING THE ESSCO DRAIN HUBS OR CATCH BASINS TO THE UNDERGROUND PIPING. THE STRAUB COUPLING MEETS THE REQUIREMENTS OF ASME B16.5 MAKING IT EQUAL TO A FLANGE OR WELD CONNECTION. THE STRAUB COUPLING IS A MUCH SAFER AND FASTER CONNECTION THAN WELDING TO CARBON STEEL PIPE AND WILL ALSO CONNECT CAST IRON, DUCTILE IRON AND HDPE PIPE. THE STRAUB COUPLING MAKES AN EXCEPTIONAL CONNECTION FOR UNDERGROUND PIPING BY ALLOWING THE PIPE TO BE DEFLECTED WITHIN THE COUPLING HOUSING TO MATCH THE SLOPE OF THE SEWER LINE. CONTACT ESSCO (225-753-1505) FOR MORE DETAILS.



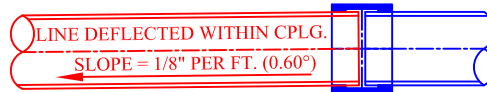
NEENAH GRATE #R-5901-B



EAST JORDAN CAT. # V3610-2



CAST IRON GRATE, HEAVY DUTY
DESIGNED FOR H-20 LOADING
FLOW THROUGH GRATE
1" PONDING = 180 GPM
2" PONDING = 269 GPM
3" PONDING = 314 GPM



STRAUB COUPLINGS CAN BE USED TO CONNECT ALL UNDERGROUND PIPING AND IS A MUCH FASTER AND SAFER CONNECTION THAN WELDING.
4" BUTT WELD, FIELD FIT = 45 MIN.
4" STRAUB CONNECTION = 5 TO 10 MIN.

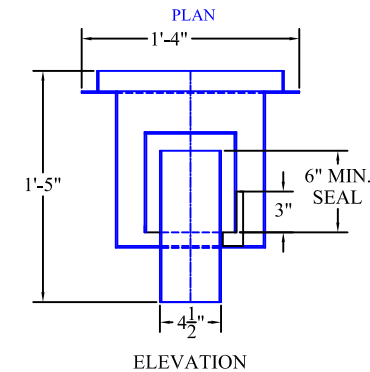


STRAUB COUPLING - 4"
P/N ESSFILN4W51143

CATCH BASIN DESIGN REQUIREMENTS

1. FLOW REQUIRED (GPM) PER C B - _____
2. LINE SIZE - _____
3. LINE TYPE - _____ (CS, CI, DI, PVC, ETC.)
4. INVERT ELEVATION - _____

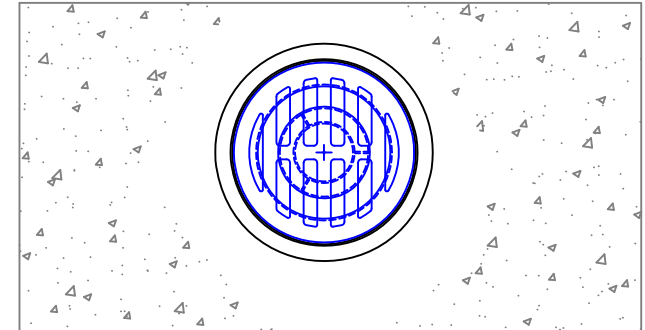
ESSCO CATCH BASINS CAN BE DESIGNED FOR ANY LINE SIZE & ANY FLOW REQUIREMENT



ESSCO HEAVY DUTY SURFACE DRAIN CATCH BASIN FOR 4" LINE.
FLOW RATE = 225 GPM THROUGH CATCH BASIN WITHOUT GRATE AT 0" PONDING
FLOW RATE DOES NOT ACCOUNT FOR ANY FRICTION LOSSES IN UNDERGROUND PIPING.
HIGHER FLOW RATES AVAILABLE. CONTACT ESSCO (225) 753-1505 FOR DESIGN DETAILS.

ESSCO CATCH BASINS & DRAIN HUBS ALLOW WATER TO FLOW THROUGH THE DRAIN WHILE BLOCKING HYDROCARBONS, TOXIC & FLAMABLE VAPORS FROM THE ATMOSPHERE. THE CAP IS REMOVABLE TO ALLOW FLUSHING OF ANY HYDROCARBONS THAT COLLECT ON THE WATER SEAL. ESSCO DRAINS ARE COMPLIANT WITH THE FOLLOWING:

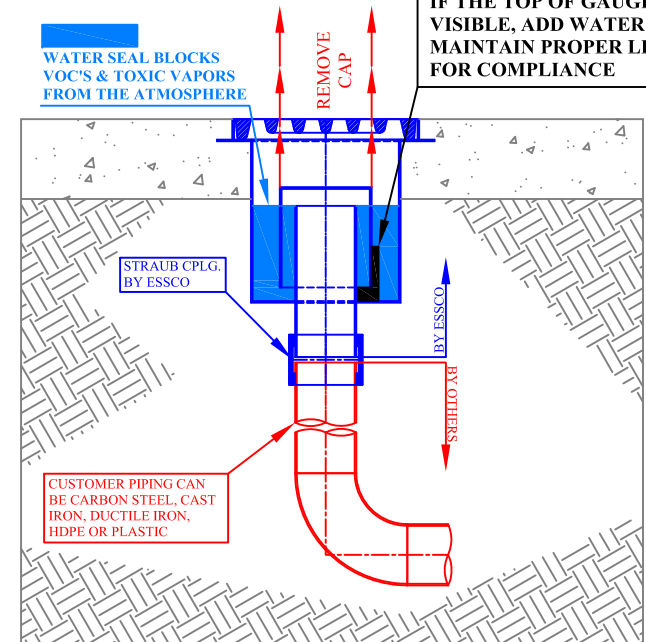
1. EPA COMPLIANCE FOR QQQ, B-1 & HON
2. API RP 500, 10.13.1, FIGURE 58, TYPE 1 OPEN DRAIN



PLAN

NOTE
ESSCO CATCH BASINS CAN BE USED AS A CLEAN OUT BY SIMPLY REMOVING THE CAP

WATER LEVEL GAUGE
IF THE TOP OF GAUGE IS VISIBLE, ADD WATER TO MAINTAIN PROPER LEVEL FOR COMPLIANCE



ELEVATION

CUSTOMER:

DATE:

MATERIAL: TYPE 304 STAINLESS STEEL

DWG. NO:

REV : 0

ESSCO PRODUCTS ARE PROTECTED BY U.S. & INTERNATIONAL PATENTS AND/OR PATENTS PENDING

ESSCO CATCH BASIN, HEAVY DUTY

ESSCO

ENVIROSAFE SEALING SYSTEMS CO., INC.
BATON ROUGE, LA (225) 753-1505

SERIAL NO.:

MODEL: ECB-SDHD-11R4-12