

ESSCO CATCH BASINS WITH FILTRATION SYSTEM MEETS THE EPA REQUIREMENTS FOR QQQ, B-1, HON, NSPS & STORM WATER PHASE II REGULATIONS. IT IS DESIGNED WITH TWO CHAMBERS. THE FIRST CHAMBER ACTS AS A SOLIDS SEPARATOR & AN OIL/WATER SEPARATOR AND COLLECTS EVERYTHING THAT WASHES INTO THE CATCH BASIN. THE SECOND CHAMBER WITH FILTER POUCH ALLOWS WATER ONLY TO FLOW THROUGH & FILTERS PARTICLES TO 150 MICRONS THEREBY ELIMINATING PLUGGING & CAUSING REDUCED FLOW IN THE UNDERGROUND SEWER SYSTEM.

RECOMMENDED CONNECTION

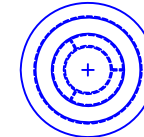
ESSCO RECOMMENDS THE STRAUB COUPLING FOR JOINING THE ESSCO DRAIN HUBS OR CATCH BASINS TO THE UNDERGROUND PIPING. THE STRAUB COUPLING MEETS THE REQUIREMENTS OF ASME B16.5 MAKING IT EQUAL TO A FLANGE OR WELD CONNECTION. THE STRAUB COUPLING IS A MUCH SAFER AND FASTER CONNECTION THAN WELDING TO CARBON STEEL PIPE AND WILL ALSO CONNECT CAST IRON, DUCTILE IRON AND HDPE PIPE. THE STRAUB COUPLING MAKES AN EXCEPTIONAL CONNECTION FOR UNDERGROUND PIPING BY ALLOWING THE PIPE TO BE DEFLECTED WITHIN THE COUPLING HOUSING TO MATCH THE SLOPE OF THE SEWER LINE. CONTACT ESSCO (225-753-1505) FOR MORE DETAILS.



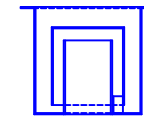
STRAUB COUPLINGS CAN BE USED TO CONNECT ALL UNDERGROUND PIPING AND IS A MUCH FASTER AND SAFER CONNECTION THAN WELDING. 6" BUTT WELD, FIELD FIT = 65 MIN. 6" STRAUB CONNECTION = 5 TO 10 MIN.



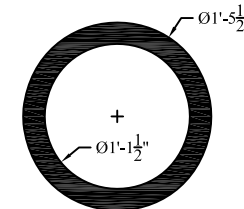
STRAUB COUPLING - 6"
P/N ESSFILN6W51683



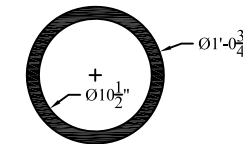
PLAN PART B



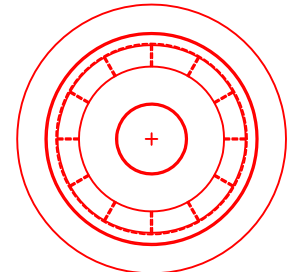
ELEVATION PART B



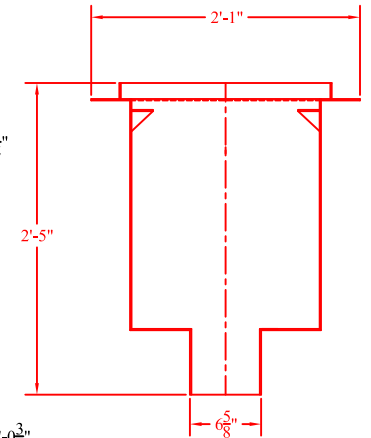
GASKET A
17 1/2" Ø OD X 13 1/2" Ø ID



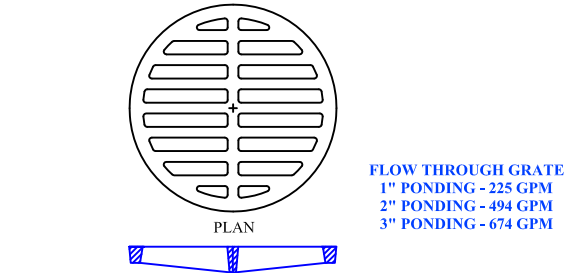
GASKET B
12 3/4" Ø OD X 10 1/2" Ø ID



PLAN PART A

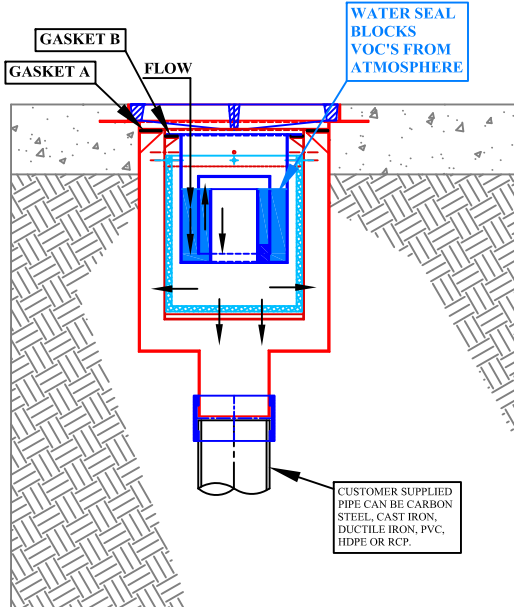


ELEVATION PART A



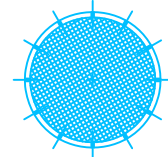
FLOW THROUGH GRATE
1" PONDING - 225 GPM
2" PONDING - 494 GPM
3" PONDING - 674 GPM

CAST IRON GRATE, HEAVY DUTY
DESIGNED FOR H-20 LOADING
EAST JORDAN CAT #V3600-1

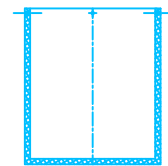


ELEVATION

CUSTOMER SUPPLIED
PIPE CAN BE CARBON
STEEL, CAST IRON,
DUCTILE IRON, PVC,
HDPE OR RCP.

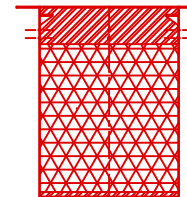


PLAN PART C



ELEVATION PART C

PROPRIETARY FILTER MEDIA
P/N ESSFMT12.63R12.75D



REMOVABLE BASKET FOR FILTER
EXPANDED METAL BOTTOM & SIDES
P/N ESSRBXM13R16D

ENVIROSAFE CATCH BASIN W/ FILTRATION SYSTEM FOR 6" LINE.
FLOW RATE = 250 GPM (APPROXIMATE) THROUGH CATCH BASIN AS DESIGNED.
FLOW RATE DOES NOT ACCOUNT FOR ANY FRICTION LOSSES IN UNDERGROUND PIPING.
HIGHER FLOW RATES AVAILABLE. CONTACT ESSCO FOR DESIGN DETAILS.

CUSTOMER:

DATE:

MATERIAL: TYPE 304 STAINLESS STEEL

DWG. NO:

REV : 0

ESSCO PRODUCTS ARE PROTECTED
BY U.S. & INTERNATIONAL PATENTS
AND/OR PATENTS PENDING

ESSCO CATCH BASIN W/ FILTRATION SYSTEM, HEAVY DUTY

ESSCO ENVIROSAFE SEALING SYSTEMS CO., INC.
BATON ROUGE, LA (225) 753-1505

SERIAL NO.:

MODEL: ECB-SDHD-10R4-12-XXR-XXD-BO6-FS