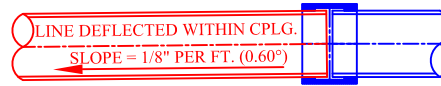


**ESSCO CATCH BASINS & DRAIN HUBS ALLOW WATER TO FLOW THROUGH THE DRAIN WHILE BLOCKING HYDROCARBONS, TOXIC & FLAMABLE VAPORS FROM THE ATMOSPHERE. THE CAP IS REMOVABLE TO ALLOW FLUSHING OF ANY HYDROCARBONS THAT COLLECT ON THE WATER SEAL. ESSCO DRAINS MEET EPA REQUIREMENTS FOR THE FOLLOWING:**

- 1. EPA COMPLIANCE FOR QQQ, B-1 & HON**
- 2. API RP 500, 10.13.1, FIGURE 58, TYPE 1 OPEN DRAIN**

**RECOMMENDED CONNECTION**

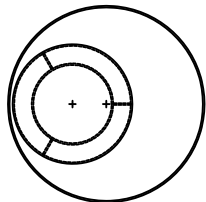
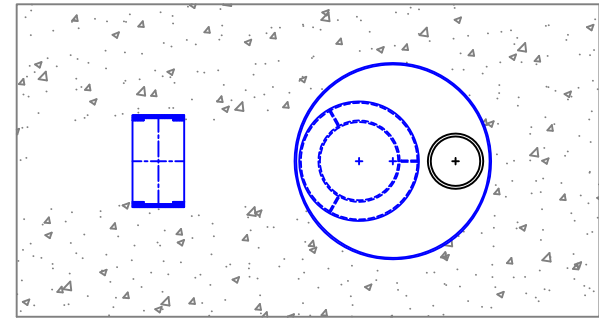
ESSCO RECOMMENDS THE STRAUB COUPLING FOR JOINING THE ESSCO DRAIN HUBS OR CATCH BASINS TO THE UNDERGROUND PIPING. THE STRAUB COUPLING MEETS THE REQUIREMENTS OF ASME B16.5 MAKING IT EQUAL TO A FLANGE OR WELD CONNECTION. THE STRAUB COUPLING IS A MUCH SAFER AND FASTER CONNECTION THAN WELDING TO CARBON STEEL PIPE AND WILL ALSO CONNECT CAST IRON, DUCTILE IRON, HDPE, RCP, & FRP PIPE. THE STRAUB COUPLING MAKES AN EXCEPTIONAL CONNECTION FOR UNDERGROUND PIPING BY ALLOWING THE PIPE TO BE DEFLECTED WITHIN THE COUPLING HOUSING TO MATCH THE SLOPE OF THE SEWER LINE. CONTACT ESSCO (225-753-1505) FOR MORE DETAILS.



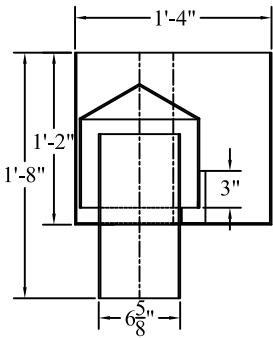
STRAUB COUPLINGS CAN BE USED TO CONNECT ALL UNDERGROUND PIPING AND IS A MUCH FASTER AND SAFER CONNECTION THAN WELDING. 6" BUTT WELD, FIELD FIT = 68 MIN. 6" STRAUB CONNECTION = 7 TO 10 MIN.



STRAUB COUPLING - 6"  
P/N ESSFILN6W51683



PLAN



ELEVATION

**DRAIN HUB DESIGN REQUIREMENTS**

- 1. FLOW REQUIRED (GPM) PER D H - \_\_\_\_\_**
- 2. LINE SIZE - \_\_\_\_\_**
- 3. LINE TYPE - \_\_\_\_\_ (CS, CI, DI, PVC, ETC.)**
- 4. INVERT ELEVATION - \_\_\_\_\_**

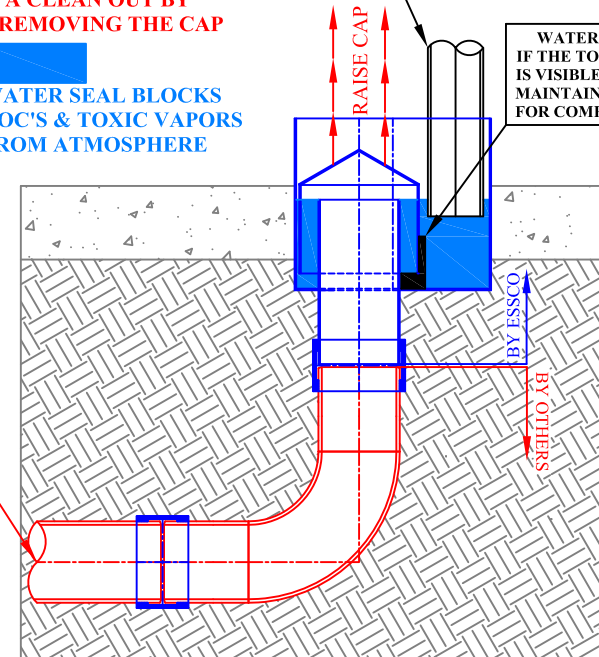
ESSCO DRAIN HUBS CAN BE DESIGNED FOR ANY LINE SIZE & ANY FLOW REQUIREMENT

INSTALL 4" OR SMALLER DRAIN LINES AS SHOWN FOR REMOVAL OF CAP WHEN FLUSHING DRAINS PRIOR TO HOT WORK, ENVIRONMENTAL TESTING OR WHEN USING DRAIN AS A CLEAN OUT

**NOTE**  
ESSCO DRAIN HUBS CAN BE USED AS A CLEAN OUT BY SIMPLY REMOVING THE CAP

**WATER SEAL BLOCKS VOC'S & TOXIC VAPORS FROM ATMOSPHERE**

WATER LEVEL GAUGE IS VISIBLE, ADD WATER TO MAINTAIN PROPER LEVEL FOR COMPLIANCE



CUSTOMER SUPPLIED PIPING CAN BE CARBON STEEL, CAST IRON, DUCTILE IRON OR HDPE. PLEASE SPECIFY LINE TYPE.

ESSCO DRAIN HUB FOR PUMP OR VESSEL DRAINS  
QQQ, B-1, HON & API 500 TYPE 1 COMPLIANT INSTALLATION

ESSCO QQQ, B-1, HON & API 500 TYPE 1 COMPLIANT DRAIN HUB FOR 6" LINE  
FLOW RATE = 500 GPM (APPROXIMATE) THROUGH PUMP DRAIN HUB AS DESIGNED  
FLOW RATE DOES NOT ACCOUNT FOR FRICTION LOSSES IN UNDERGROUND PIPING  
HIGHER FLOW RATES AVAILABLE. CONTACT ESSCO (225) 753-1505 FOR DESIGN DETAILS

CUSTOMER:	DATE:	MATERIAL: TYPE 304 STAINLESS STEEL	DWG. NO.:
	ESSCO PRODUCTS ARE COVERED BY CURRENT PATENTS OR PATENTS PENDING	ESSCO DRAIN HUB - PUMP OR VESSEL DRAIN	
SERIAL NO.:	<b>ESSCO</b> ENVIROSAFE SEALING SYSTEMS CO., INC. BATON ROUGE, LA (225) 753-1505		
	MODEL: ECB-PDHOS-16R6-14		