

ESSCO CATCH BASINS & DRAIN HUBS ALLOW WATER TO FLOW THROUGH THE DRAIN WHILE BLOCKING HYDROCARBONS, TOXIC & FLAMABLE VAPORS FROM THE ATMOSPHERE. THE CAP IS REMOVABLE TO ALLOW FLUSHING OF ANY HYDROCARBONS THAT COLLECT ON THE WATER SEAL. ESSCO DRAINS MEET EPA REQUIREMENTS FOR THE FOLLOWING:

1. EPA COMPLIANCE FOR QQQ, B-1 & HON
2. API RP 500, 10.13.1, FIGURE 58, TYPE 1 OPEN DRAIN

RECOMMENDED CONNECTION

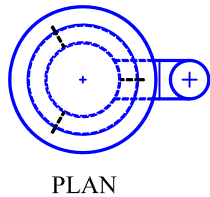
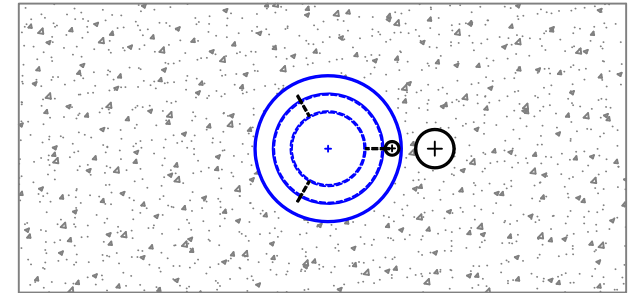
ESSCO RECOMMENDS THE STRAUB COUPLING FOR JOINING THE ESSCO DRAIN HUBS OR CATCH BASINS TO THE UNDERGROUND PIPING. THE STRAUB COUPLING MEETS THE REQUIREMENTS OF ASME B16.5 MAKING IT EQUAL TO A FLANGE OR WELD CONNECTION. THE STRAUB COUPLING IS A MUCH SAFER AND FASTER CONNECTION THAN WELDING TO CARBON STEEL PIPE AND WILL ALSO CONNECT CAST IRON, DUCTILE IRON, HDPE, RCP, & FRP PIPE. THE STRAUB COUPLING MAKES AN EXCEPTIONAL CONNECTION FOR UNDERGROUND PIPING BY ALLOWING THE PIPE TO BE DEFLECTED WITHIN THE COUPLING HOUSING TO MATCH THE SLOPE OF THE SEWER LINE. CONTACT ESSCO (225-753-1505) FOR MORE DETAILS.



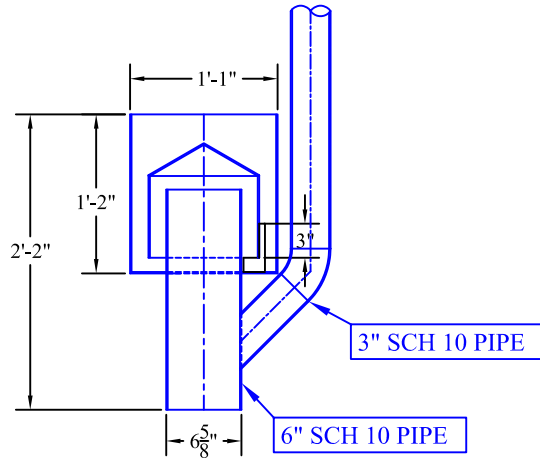
STRAUB COUPLINGS CAN BE USED TO CONNECT ALL UNDERGROUND PIPING AND IS A MUCH FASTER AND SAFER CONNECTION THAN WELDING.
 6" BUTT WELD, FIELD FIT = 68 MIN.
 6" STRAUB CONNECTION = 7 TO 10 MIN.



STRAUB COUPLING - 6"
 P/N ESSF1LN4W51683



PLAN



ELEVATION

DRAIN HUB DESIGN REQUIREMENTS

1. FLOW REQUIRED (GPM) PER D H - _____
2. LINE SIZE - _____
3. LINE TYPE - _____ (CS, CI, DI, PVC, ETC.)
4. INVERT ELEVATION - _____

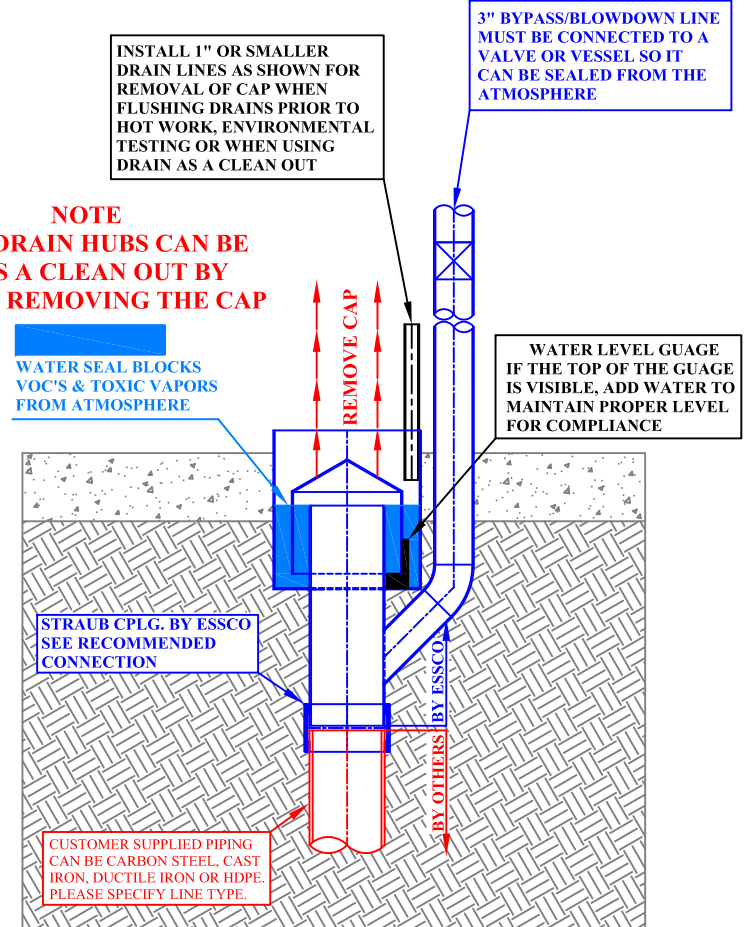
ESSCO DRAIN HUBS CAN BE DESIGNED FOR ANY LINE SIZE & ANY FLOW REQUIREMENT

NOTE
 ESSCO DRAIN HUBS CAN BE USED AS A CLEAN OUT BY SIMPLY REMOVING THE CAP

WATER SEAL BLOCKS VOC'S & TOXIC VAPORS FROM ATMOSPHERE

STRAUB CPLG. BY ESSCO SEE RECOMMENDED CONNECTION

CUSTOMER SUPPLIED PIPING CAN BE CARBON STEEL, CAST IRON, DUCTILE IRON OR HDPE. PLEASE SPECIFY LINE TYPE.



ESSCO DRAIN HUB FOR QQQ, B-1, HON & NSPS COMPLIANT PUMP OR VESSEL INSTALLATION

ESSCO QQQ, B-1, HON & API 500 TYPE 1 COMPLIANT DRAIN HUB FOR 6" LINE
 FLOW RATE = 500 GPM (APPROXIMATE) THROUGH PUMP DRAIN HUB AS DESIGNED
 FLOW RATE DOES NOT ACCOUNT FOR FRICTION LOSSES IN UNDERGROUND PIPING
 HIGHER FLOW RATES AVAILABLE. CONTACT ESSCO (225) 753-1505 FOR DESIGN DETAILS

CUSTOMER:

DATE:

MATERIAL: TYPE 304 STAINLESS STEEL

DWG. NO:

REV : 0

ESSCO PRODUCTS ARE PROTECTED BY U.S. & INTERNATIONAL PATENTS AND/OR PATENTS PENDING

ESSCO DRAIN HUB WITH BY PASS / BLOWDOWN LINE

ESSCO ENVIROSAFE SEALING SYSTEMS CO., INC.
 BATON ROUGE, LA (225) 753-1505

SERIAL NO.:

MODEL: ECB-PDH-13R6-14-BYPASS