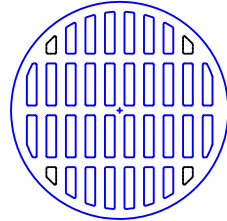


ESSCO CATCH BASINS & DRAIN HUBS ALLOW WATER TO FLOW THROUGH THE DRAIN WHILE BLOCKING HYDROCARBONS, TOXIC & FLAMABLE VAPORS FROM THE ATMOSPHERE. THE CAP IS REMOVABLE TO ALLOW FLUSHING OF ANY HYDROCARBONS THAT COLLECT ON THE WATER SEAL. ESSCO DRAINS ARE COMPLIANT WITH THE FOLLOWING:

1. EPA COMPLIANCE FOR QQQ, B-1 & HON
2. API RP 500, 10.13.1, FIGURE 58, TYPE 1 OPEN DRAIN
3. STORM WATER PHASE II REGULATIONS



NEENAH GRATE # R-5901-E

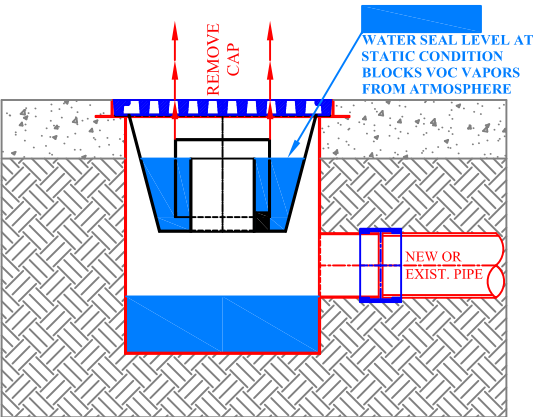
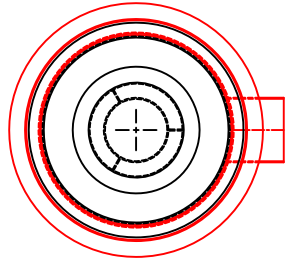
E J GRATE # V3610-4

**CAST IRON GRATE, HEAVY DUTY
DESIGNED FOR H-20 LOADING**

NEENAH GRATE #R-5901-E

EJIW GRATE #V3610-4

FLOW THROUGH GRATE
1" PONDING = 269 GPM
2" PONDING = 584 GPM
3" PONDING = 808 GPM



RECOMMENDED CONNECTION
 ESSCO RECOMMENDS THE STRAUB COUPLING FOR JOINING THE ESSCO DRAIN HUBS OR CATCH BASINS TO THE UNDERGROUND PIPING. THE STRAUB COUPLING MEETS THE REQUIREMENTS OF ASME B16.5 MAKING IT EQUAL TO A FLANGE OR WELD CONNECTION. THE STRAUB COUPLING IS A MUCH SAFER AND FASTER CONNECTION THAN WELDING TO CARBON STEEL PIPE AND WILL ALSO CONNECT CAST IRON, DUCTILE IRON AND HDPE PIPE. THE STRAUB COUPLING MAKES AN EXCEPTIONAL CONNECTION FOR UNDERGROUND PIPING BY ALLOWING THE PIPE TO BE DEFLECTED WITHIN THE COUPLING HOUSING TO MATCH THE SLOPE OF THE SEWER LINE. CONTACT ESSCO (225-753-1505) FOR MORE DETAILS.



STRAUB COUPLINGS CAN BE USED TO CONNECT ALL UNDERGROUND PIPING AND IS A MUCH FASTER AND SAFER CONNECTION THAN WELDING.
 6" BUTT WELD, FIELD FIT = 65 MIN.
 6" STRAUB CONNECTION = 5 TO 10 MIN.



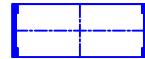
STRAUB COUPLING - 6"
 P/N ESSF1LN6W51683



STRAUB COUPLING - 8"
 P/N ESSF2LN8W52191



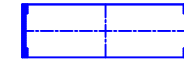
STRAUB COUPLING - 10"
 P/N ESSF2LN10W52730



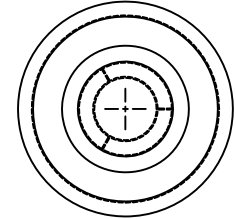
STRAUB COUPLING - 12"
 P/N ESSF2LN12W53239



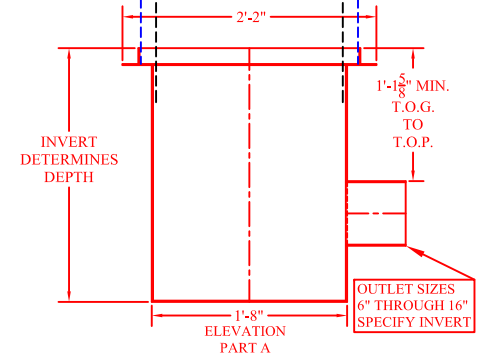
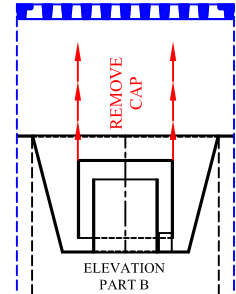
STRAUB COUPLING - 14"
 P/N ESSF2LN14W53556



STRAUB COUPLING - 16"
 P/N ESSF2LN16W54064



PLAN
 PART B



CATCH BASIN DESIGN REQUIREMENTS

1. FLOW REQUIRED (GPM) PER C B - _____
2. LINE SIZE - _____
3. LINE TYPE - _____ (CS, CI, DI, PVC, ETC.)
4. INVERT ELEVATION - _____

ESSCO AREA DRAINS CAN BE DESIGNED FOR ANY LINE SIZE & ANY FLOW REQUIREMENT

ESSCO AREA DRAIN, HEAVY DUTY FOR 6", 8", 10", 12", 14" OR 16" LINE.

FLOW RATE = 500 GPM THROUGH AREA DRAIN WITHOUT GRATE.

FLOW RATE DOES NOT ALLOW FOR ANY FRICTION LOSSES IN UNDERGROUND PIPING.

HIGHER FLOW RATES AVAILABLE. CONTACT ESSCO (225-753-1505)

CUSTOMER:

DATE:

MATERIAL: TYPE 304 STAINLESS STEEL

DWG. NO:

REV : 0

ESSCO PRODUCTS ARE PROTECTED BY U.S. & INTERNATIONAL PATENTS AND/OR PATENTS PENDING

ESSCO CATCH BASIN, HEAVY DUTY

ESSCO

ENVIROSAFE SEALING SYSTEMS CO., INC.

BATON ROUGE, LA (225) 753-1505

SERIAL NO.:

MODEL: ECB-ADHD-19X13R6-12-20R-XXD-SOXX