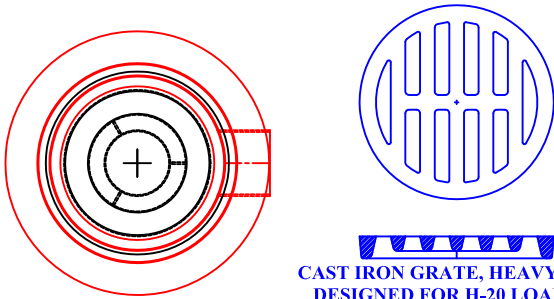


ESSCO CATCH BASINS & DRAIN HUBS ALLOW WATER TO FLOW THROUGH THE DRAIN WHILE BLOCKING HYDROCARBONS. TOXIC & FLAMABLE VAPORS FROM THE ATMOSPHERE. THE CAP IS REMOVABLE TO ALLOW FLUSHING OF ANY HYDROCARBONS THAT COLLECT ON THE WATER SEAL. ESSCO DRAINS ARE COMPLIANT WITH THE FOLLOWING:

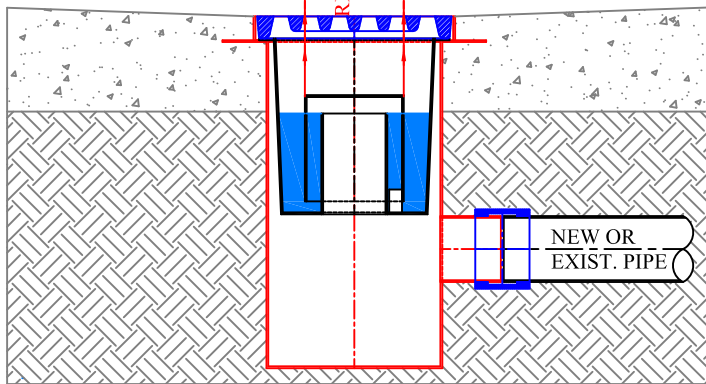
- 1. EPA COMPLIANCE FOR QQQ, B-1 & HON**
- 2. API RP 500, 10.13.1, FIGURE 58, TYPE 1 OPEN DRAIN**



PLAN

**CAST IRON GRATE, HEAVY DUTY
DESIGNED FOR H-20 LOADING
NEENAH GRATE #R-5901-B
EJIW GRATE #V3610-2
FLOW THROUGH GRATE
1" PONDING = 180 GPM
2" PONDING = 269 GPM
3" PONDING = 314 GPM**

**WATER SEAL LEVEL
AT STATIC CONDITION
BLOCKS VOC'S FROM
ATMOSPHERE**



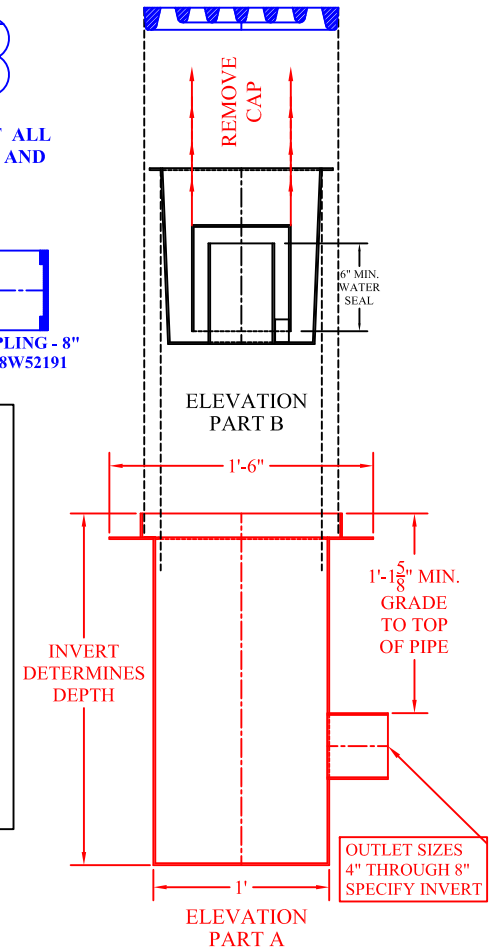
ELEVATION

**ESSCO AREA DRAIN, HEAVY DUTY, FOR 4", 6" OR 8" LINE SIZE.
FLOW RATE = 225 GPM THROUGH AREA DRAIN WITHOUT GRATE.
FLOW RATE DOES NOT ALLOW FOR ANY LOSSES IN UNDERGROUND PIPING.
CONTACT ESSCO (225-753-1505) FOR HIGHER FLOW RATE REQUIREMENTS.**

RECOMMENDED CONNECTION
ESSCO RECOMMENDS THE STRAUB COUPLING FOR JOINING THE ESSCO DRAIN HUBS OR CATCH BASINS TO THE UNDERGROUND PIPING. THE STRAUB COUPLING MEETS THE REQUIREMENTS OF ASME B16.5 MAKING IT EQUAL TO A FLANGE OR WELD CONNECTION. THE STRAUB COUPLING IS A MUCH SAFER AND FASTER CONNECTION THAN WELDING TO CARBON STEEL PIPE AND WILL ALSO CONNECT CAST IRON, DUCTILE IRON AND HDPE PIPE. THE STRAUB COUPLING MAKES AN EXCEPTIONAL CONNECTION FOR UNDERGROUND PIPING BY ALLOWING THE PIPE TO BE DEFLECTED WITHIN THE COUPLING HOUSING TO MATCH THE SLOPE OF THE SEWER LINE. CONTACT ESSCO (225-753-1505) FOR MORE DETAILS.



STRAUB COUPLINGS CAN BE USED TO CONNECT ALL UNDERGROUND PIPING AND IS A MUCH FASTER AND SAFER CONNECTION THAN WELDING.
4" BUTT WELD, FIELD FIT = 45 MIN.
4" STRAUB CONNECTION = 5 TO 10 MIN.



CATCH BASIN DESIGN REQUIREMENTS

- 1. FLOW REQUIRED (GPM) PER C B - _____**
- 2. LINE SIZE - _____**
- 3. LINE TYPE - _____ (CS, CI, DI, PVC, ETC.)**
- 4. INVERT ELEVATION - _____**

ESSCO AREA DRAINS CAN BE DESIGNED FOR ANY LINE SIZE & ANY FLOW REQUIREMENT

CUSTOMER:

DATE:

MATERIAL: TYPE 304 STAINLESS STEEL

DWG. NO.:

ESSCO PRODUCTS ARE COVERED BY CURRENT PATENTS OR PATENTS PENDING

ESSCO AREA DRAIN - HEAVY DUTY

ESSCO ENVIROSAFE SEALING SYSTEMS CO., INC.
BATON ROUGE, LA (225) 753-1505

SERIAL NO.:

MODEL: ECB-ADHD-11X10R4-12-12R-XXD-SOXX